

ibaLicenseService-V2

License management for iba software products



Manual

Issue 2.0

Measurement and Automation Systems



Manufacturer

iba AG
Koenigswarterstr. 44
90762 Fuerth
Germany

Contacts

Main office	+49 911 97282-0
Fax	+49 911 97282-33
Support	+49 911 97282-14
Engineering	+49 911 97282-13

E-Mail: iba@iba-ag.com

Web: www.iba-ag.com

This manual must not be circulated or copied, or its contents utilized and disseminated, without our express written permission. Any breach or infringement of this provision will result in liability for damages.

©iba AG 2013, All Rights Reserved

The content of this publication has been checked for compliance with the described hardware and software. Nevertheless, deviations cannot be excluded completely so that the full compliance is not guaranteed. However, the information in this publication is updated regularly. Required corrections are contained in the following regulations or can be downloaded on the Internet.

The current version is available for download on our web site <http://www.iba-ag.com>.

Protection note

Windows® is a label and registered trademark of the Microsoft Corporation. Other product and company names mentioned in this manual can be labels or registered trademarks of the corresponding owners.

Version	Date	Revision	Chapter	Pages	Author	Version License-Service
V 2.0	06-2013	complete review	all			

Table of Contents

1	About this manual	5
1.1	Target group.....	5
1.2	Basic knowledge.....	5
1.3	Notations.....	5
1.4	Used symbols.....	6
2	Introduction	7
2.1	Compatibility.....	8
3	Installation	9
3.1	System Requirements.....	9
3.1.1	Hardware.....	9
3.1.2	Software.....	9
3.2	Installation.....	9
3.2.1	Firewall settings.....	10
3.2.2	Software deployment within a network.....	10
4	Program interface	12
4.1	The screen.....	12
4.2	The menu bar.....	12
5	Setup	14
5.1	Server mode setup.....	14
5.2	Client mode setup.....	17
5.3	Logs.....	17
5.4	Statistics.....	19
5.5	Administration.....	20
5.5.1	PC Setup.....	21
5.5.2	Editing a license configuration.....	22
6	Support & Contact	23

1 About this manual

This manual describes in detail the use of the product ibaLicenseService-V2.

1.1 Target group

This manual addresses in particular the qualified professionals who are familiar with handling electrical and electronic modules as well as communication and measurement technology. A person is regarded to as professional if he/she is capable of assessing safety and recognizing possible consequences and risks on the basis of his/her specialist training, knowledge and experience and knowledge of the standard regulations.

1.2 Basic knowledge

The following knowledge is required for the operation of the software ibaLicenseService-V2:

- Basic knowledge of Windows operating system

1.3 Notations

In this manual the following notations are used:

Action	Notation
Menu command	Menu „Logic diagram“
Call of menu command	„Step 1 – Step 2 – Step 3 – Step x“ Example: Select menu „Logic diagram – Add – New logic diagram ”
Keys	<Key name> Example: <Alt>; <F1>
Press keys simultaneously	<Key name> + <Key name> Example: <Alt> + <Strg>
Buttons	<Button name> Example: <OK>; <Cancel>
File names, Paths	„File name“, „Path“ Example: „Test.doc“

1.4 Used symbols

If safety instructions or other information are used in this manual, they mean:

DANGER

The non-observance of this safety information may result in an imminent risk of death or severe injury:

- By an electric shock!
- Due to the improper handling of iba software products which are coupled to input and output procedures with control function!

If you do not observe the safety instructions regarding the process and the system or machine to be controlled, there is a risk of death or severe injury!

WARNING

The non-observance of this safety information may result in a potential risk of death or severe injury!

CAUTION

The non-observance of this safety information may result in a potential risk of injury or material damage!



Note

A note indicates special requirements or actions to be observed.



Important information

Information that a special indication has to be observed, e.g. exceptions from the general rule.



Tip

Tip or example which serves as helpful information or a trick to facilitate the work.



Other documentation

Reference to supplementary documentation or further literature.

2 Introduction

ibaLicenseService-V2 is a software service for managing the iba software licenses in distributed topologies. This service has been introduced with respect to the request for group or enterprise licenses from our customers. The service is related to the following software products:

- ❑ ibaAnalyzer DB (database extractor)
- ❑ ibaAnalyzer DAT-Extractor (data file extractor)
- ❑ ibaAnalyzer E-Dat (import of external data files for analysis)
- ❑ ibaDatManager

By using ibaLicenseService-V2 it is possible to run client applications such as ibaAnalyzer-DB on multiple PCs without the requirement to have a dongle on each PC. The multiple licenses are stored on a dongle which is plugged on a server PC.

Other users may start their license-depending application on any PC (clients) in the network with connection to the server PC. By means of ibaLicenseService-V2 the application will check the number of available and currently unused licenses in the central dongle.

If the available licenses are already used by running applications in the network the start of more applications i.e. license-depending features will be denied. When the last application requesting a certain license running on a PC is closed, it will be available again for other users. If you want to ensure that a PC will receive a license, it is possible to reserve a dedicated license for this PC.

ibaLicenseService-V2 must be installed on all PCs (server and clients) which should take part in the use of multiple licenses. Of course, the application (e.g. ibaAnalyzer) must be installed on all PCs too. Licenses are given per PC, not per instance of an application. That means that multiple instances of an application may run on one PC but using only one license.

If the dongle is disconnected from the server, no license is available at all.

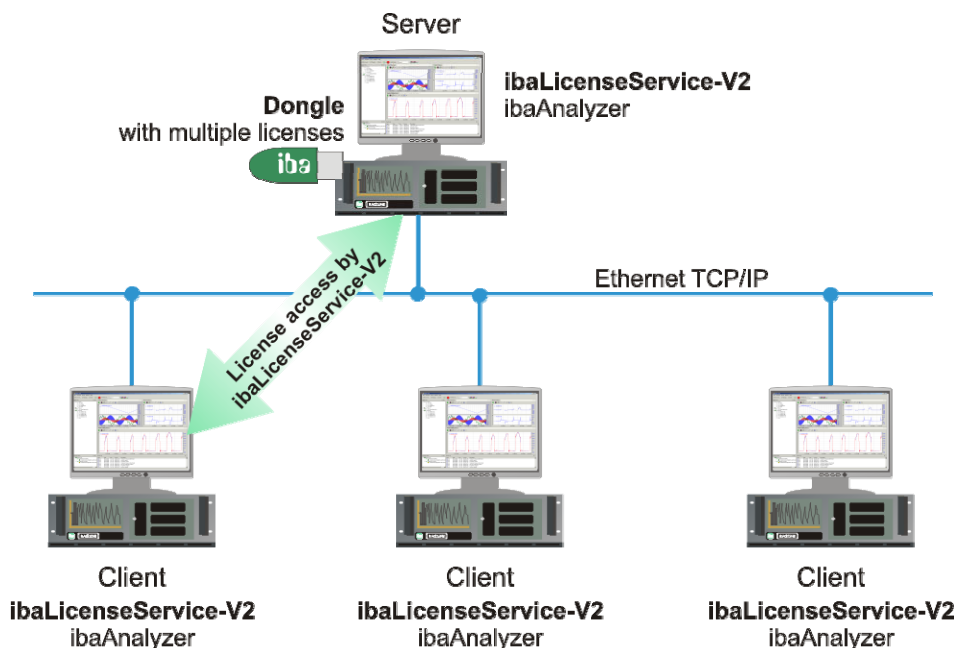


Figure 1: Server-client topology with one dongle and ibaLicenseService-V2

2.1 Compatibility

The ibaLicenseService-V2 application is a complete new development which replaces the previous version of ibaLicenseService (v1.7). The following tables provide an overview of both applications regarding the support of iba applications and operating systems.

The applications are compatible with the following iba software versions:

	ibaAnalyzer < v6.2	ibaAnalyzer ≥ v6.2	ibaDatManager
ibaLicenseService-V2	–	ok	ok
ibaLicenseService (≤v1.7)	ok	–	–

The applications are compatible with the following Windows operating systems:

	2000	XP	7/8 32 bit	7/8 64 bit	Server 2003 R2 32 bit	Server 2008 R2 64 bit	Server 2012 64 bit
ibaLicenseService-V2	–	ok	ok	ok	ok	ok	ok
ibaLicenseService (≤v1.7)	ok	ok	–	–	ok	–	–

The support for some older versions of operating systems has been dropped.

Dongle types

- Marx SmarxOS Dongle for ibaLicenseService-V2
- Marx Crypto Box MPI Dongle for ibaLicenseService (≤v1.7)

3 Installation

3.1 System Requirements

3.1.1 Hardware

- ❑ PC, P4 1 GHz, min. 512 MB RAM, 40 GB HDD or better
- ❑ 1 iba USB-dongle with one or multiple licenses, see also chap. 2.1

3.1.2 Software


- ❑ Operating system: Windows XP, Windows 7 / 8, Windows Server 2003 / 2008 / 2012
- ❑ ibaAnalyzer v6.2 or higher or ibaDatManager
- ❑ Microsoft .NET Framework 4.0

3.2 Installation

Make sure you have administrator rights. Copy the file “ibaLicenseServiceV2Setup_vX.Y.Z.exe” in a temporary directory of your PC.

The installation wizard starts with a double click on the “ibaLicenseServiceV2Setup_vX.Y.Z.exe” file.

Follow the instructions of the install wizard.

After ibaLicenseService-V2 has been successfully installed you'll find the service's icon in the system tray .

The installation should be performed on every PC – server and clients – to be used by the supported applications.

After installation the ibaLicenseService-V2 should start automatically.

If, due to any reason, the service should not run, it is possible to start the service manually in the Windows system settings (XP: control panel, administrative tools and services).

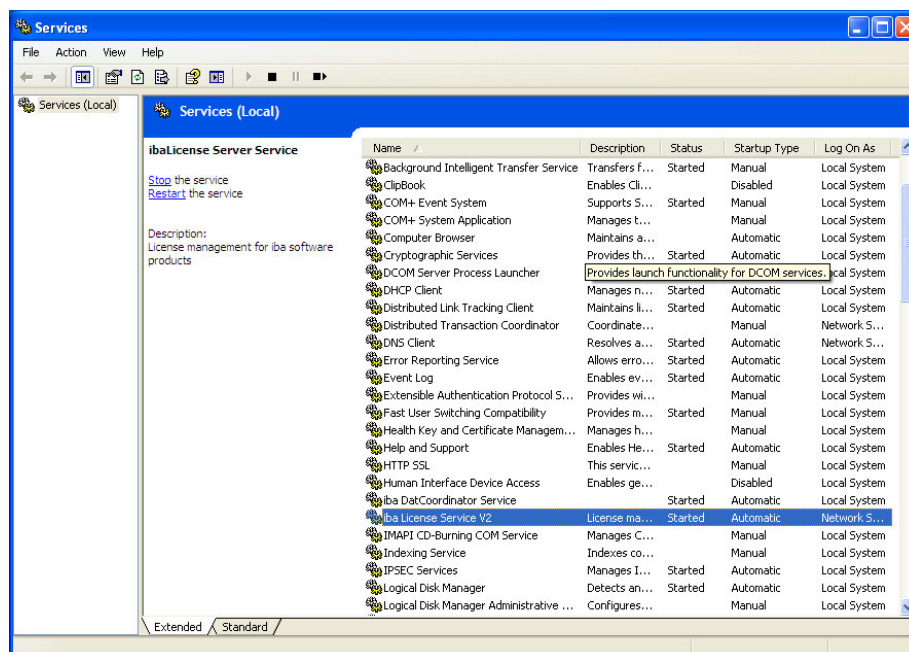


Figure 2: ibaLicenseService-V2 in Windows services



Important note

Ensure that the same ibaLicenseService-V2 version is used on every PC.

3.2.1 Firewall settings

The required firewall settings are automatically adjusted during the setup process.

The ibaLicenseService-V2 needs two ports which must be configured in the computer firewall:

Port: 9033	Protocol: TCP	Usage: Data
Port: 8766	Protocol: TCP	Usage: Remoteconfiguration

A firewall rule is also necessary, which allows the „ibaLicenseService.exe“ to communicate with the network.

When the application is installed by default, you find the „ibaLicenseService.exe“ file in the following directories:

- Using 32 bit systems:
C:\Program Files\iba\ibaLicenseServiceV2\LicenseService\
- Using 64 bit systems:
C:\Program Files(x86)\iba\ibaLicenseServiceV2\LicenseService\

3.2.2 Software deployment within a network

Silent installation can be triggered with the commandline switch /s, e.g. „ibaLicenseServiceV2Setup_vX.Y.Z.exe /s“

For preconfigured installations on the target system you can also use the /defaultconfig commandline switch and a DefaultConfig.ini.

The ini-File must be accessible for the client if it's on a network drive or UNC-path.

```
ibaLicenseServiceV2Setup_vX.Y.Z.exe /defaultconfig DefaultConfig.ini
ibaLicenseServiceV2Setup_vX.Y.Z.exe /defaultconfig C:\TEMP\DefaultConfig.ini
ibaLicenseServiceV2Setup_vX.Y.Z.exe /defaultconfig ..\DefaultConfig.ini
```

The client needs at least read access to the <Share> folder.

```
ibaLicenseServiceV2Setup_vX.Y.Z.exe /defaultconfig \\<IP-Address>\<Share>\DefaultConfig.ini
ibaLicenseServiceV2Setup_vX.Y.Z.exe /defaultconfig \\<Computername>\<Share>\DefaultConfig.ini
```

A combination of these switches is also possible in order to install the ibaLicenseService-V2 silent and preconfigured.

The content of the “DefaultConfig.ini” file:

```
----- DefaultConfig.ini -----
;Default configuration for deploying on iba license service clients
;RemoteAddress: Address or DNS name of dongle server
;RemoteDongle: RemoteAddress is remote machine (true/false default: true)
;RemoteTcpPort: Communication port (default: 9033)
;RemoteWCFPort: Configuration port (default: 8766)

[ServiceConfig]
RemoteAddress=somehost
RemoteDongle=true
;RemoteTcpPort=9033
;RemoteWCFPort=8766

;Licenses:
;Lic1: ibaAnalyzer E-Dat
;Lic2: ibaAnalyzer DB
;Lic3: ibaAnalyzer DAT-Extraktor
;Lic4: ibaDatManager
[Reserved]
;(default: false)
;Lic1=false
;Lic2=false
;Lic3=false
;Lic4=false


[Usable]
;(default: true)
;Lic1=true
;Lic2=true
;Lic3=true
;Lic4=true
----- DefaultConfig.ini -----
```

If a particular license should be set to reserved or not usable, modify the corresponding line under [Reserved] or [Usable] and remove the leading semicolon to uncomment the line.

4 Program interface

4.1 The screen

After installation is complete start the application via

- a double-click on the  icon in the system tray or
- the Windows program menu (Start button): "Start - All programs - iba – ibaLicenseService-V2 – ibaLicense Service V2".

The setup dialog with the following sections appears.

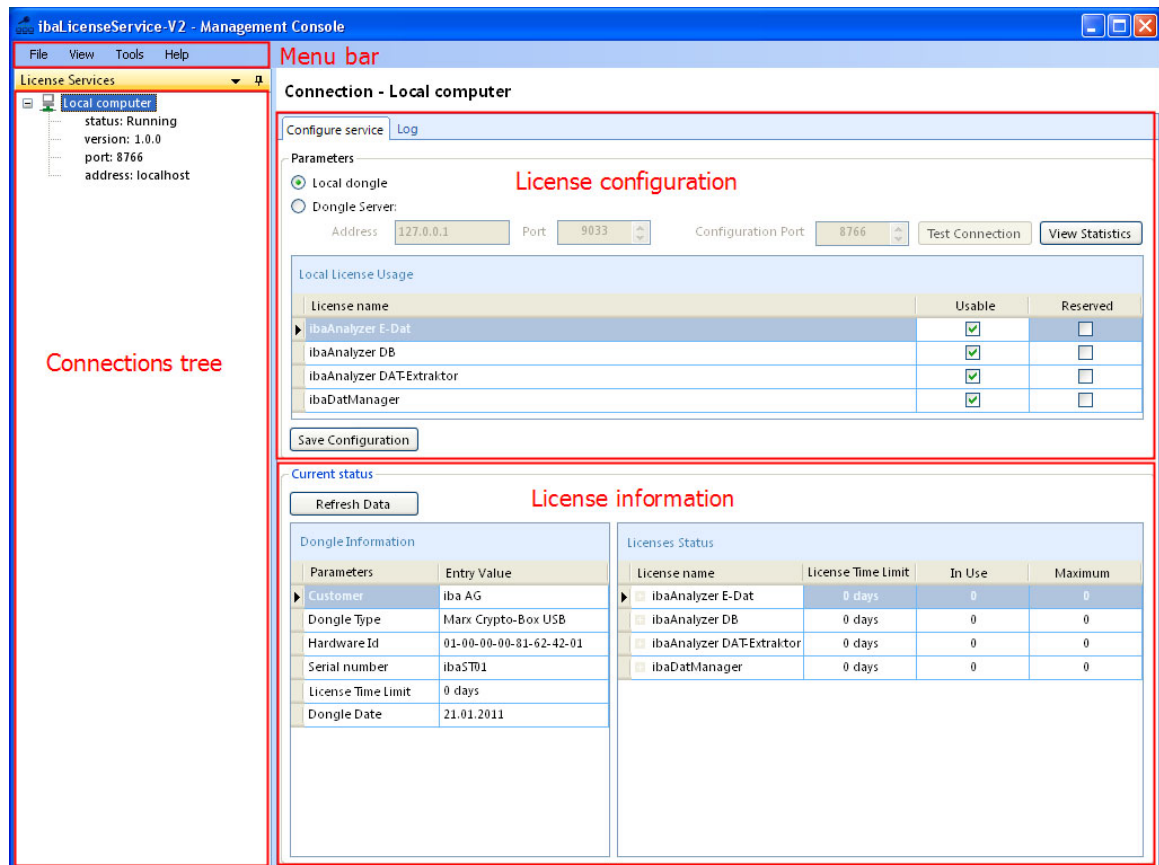
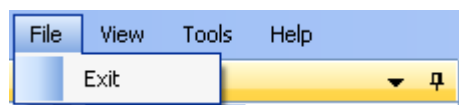


Figure 3: User interface

4.2 The menu bar

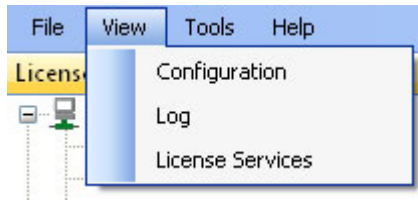
The following options and associated pull-down menus are available:

File



- Exit: The ibaLicenseService-V2 program will be closed.

View



- Configuration: Opens the “Configure service” tab.
- Log: Opens the “Log” tab.
- License Services: Opens the “License services” window.

Tools



- Start /Stop Service: The license service is stopped and will be started again on this PC.

Help



- About: Opens a window with information about the program version.

5 Setup

5.1 Server mode setup

If not done yet, plug in the dongle on the USB interface of the PC.

1. Start the ibaLicenseService-V2 application.

The screenshot shows the configuration interface for ibaLicenseService-V2. In the 'Parameters' section, the 'Local dongle' radio button is selected. The 'Address' is set to 127.0.0.1, 'Port' is 9033, and 'Configuration Port' is 8766. There are 'Test Connection' and 'View Statistics' buttons. Below this is a table titled 'Local License Usage' with columns for 'License name', 'Usable', and 'Reserved'. The table contains four rows: ibaAnalyzer E-Dat, ibaAnalyzer DB, ibaAnalyzer DAT-Extraktor, and ibaDatManager. The 'Usable' column has checkboxes checked for all four products, and the 'Reserved' column has unchecked checkboxes for all four. A 'Save Configuration' button is at the bottom.

License name	Usable	Reserved
ibaAnalyzer E-Dat	<input checked="" type="checkbox"/>	<input type="checkbox"/>
ibaAnalyzer DB	<input checked="" type="checkbox"/>	<input type="checkbox"/>
ibaAnalyzer DAT-Extraktor	<input checked="" type="checkbox"/>	<input type="checkbox"/>
ibaDatManager	<input checked="" type="checkbox"/>	<input type="checkbox"/>

2. Click the radio button “Local dongle” in the “Parameters” section. Do not change the default values of the port number and the configuration port number.
3. In the table below specify if the license for the listed product is usable and/or reserved for your PC by a click in the checkbox. The meaning is:

- Usable** The license on the dongle may be used by the application on your PC. A license-request is sent to the server when the application is being started and the Usable box is checked.
- Usable** The application cannot be used on your PC. Hence, a license cannot be blocked for other users in the network.
- Reserved** A license is reserved for your PC. A license request is sent to the server, when the PC is started. After a successful license request, the license remains permanently reserved (until the license service will be stopped or the PC will be shut down).
- Reserved** You will only receive a license, when a free license is available and the “Usable” option is activated.

The products are:

- ibaAnalyzer E-Dat
- ibaAnalyzer DB
- ibaAnalyzer DAT-Extraktor
- ibaDatManager.

4. Confirm with a click on <Save Configuration>.

In the “Current status” section you find information about the dongle and the status of the current licenses. With a click on <Refresh Data> you will get the latest information. **The display does not refresh automatically.**

Dongle information

Dongle Information	
Parameters	Entry Value
▶ Customer	iba AG - Smarx OS Testdongle
Dongle Type	Marx Crypto-Box SmarxOS USB
Hardware Id	97-00-01-00-33-3D-00-01
Serial Number	0000000
License Time Limit	335 days
Dongle Date	29.05.2013

Figure 4: Dongle Information

In the area “Dongle Information” you find general information about the installed dongle. The serial number is important because it is connected to your order number at iba. The iba support will request this number in the event of an upgrade or support case.

The display of the time limit may also be important. If a time limit is shown in the field “License Time Limit”, please make sure that you update your temporary license into an unlimited license in time in order to avoid unintended shut down of the application.



Note

ibaLicenseService-V2 only supports SmarxOS dongles. If another dongle type is connected, the dongle type information displays “Not supported”.

Dongle Information	
Parameters	Entry Value
▶ Customer	
Dongle Type	Not supported

If no dongle is connected, the dongle type information displays “Not available”.

Dongle Information	
Parameters	Entry Value
▶ Customer	
Dongle Type	Not available

License information

Licenses Status			
License name	License Time Limit	In Use	Maximum
ibaAnalyzer E-Dat	335 days	0	20
ibaAnalyzer DB	335 days	0	20
ibaAnalyzer DAT-Extraktor	335 days	0	20
ibaDatManager	335 days	9	10

Figure 5: Status of licenses

The section “Licenses Status” gives information regarding the status of the licenses provided by the dongle (separated by the products):

- “License Time Limit”: period of validity
- “In Use”: number of licenses in use
- “Maximum”: maximum available licenses provided by the dongle.

A click on the <+> symbol right before the license name shows license details, like the IP addresses of the PCs which have booked the license.

Licenses Status			
License name	License Time Limit	In Use	Maximum
ibaAnalyzer E-Dat	335 days	0	20
ibaAnalyzer DB	335 days	0	20
ibaAnalyzer DAT-Extraktor	335 days	0	20
ibaDatManager	335 days	9	10

Active license details		
Computer Name	Computer Address	Session Id
Win2003r2	10.10.0.55	3
Win2008r2	10.10.0.56	1
win7x86-ils	10.10.0.57	1
Win2003r2	10.10.0.55	2
win7x64-ils	10.10.0.60	1

Figure 6: License details

5.2 Client mode setup

If not done yet, make sure that client PC and server PC are connected over a network, that the dongle is plugged in the server PC and that ibaLicenseService-V2 is installed and running on the client PC and on the server PC.

1. Start the ibaLicenseService-V2 application.
2. Click the radio button “Dongle Server”.
3. Enter computer name or IP address of the server PC into the “Address” field. Do not change the default values of the port number and the configuration port number.
4. With a click on <Test Connection>, you can test, whether you can connect to the server PC successfully.
5. In the table below specify if the license for the listed product is usable and/or reserved for your PC, see also chap. 5.1 “Server mode setup”.
6. Confirm with a click on <Save Configuration>.

Figure 7: Dongle server connection

Dongle information

In the “Current status” section you find information regarding the dongle connected to the server PC, see also chap. 5.1 “Server mode setup”.

License information

See chap. 5.1 “Server mode setup”.

5.3 Logs

All relevant system events, such as configuration changes or license requests are logged and listed in the “Log” tab. Click on the “Log” tab or select “Log” in the “View” menu.

You can filter the list and display the last 100/200/500 entries:

Figure 8: Filter logs

Or you can display the entries since a certain date by using the calendar:

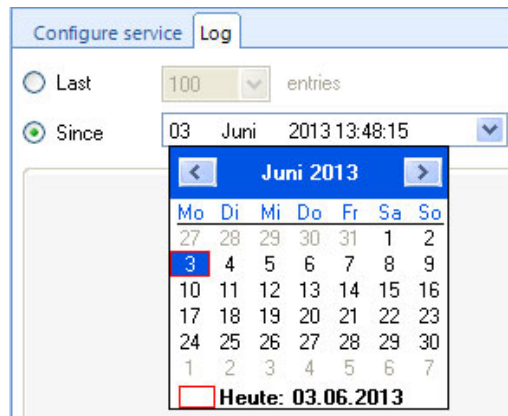


Figure 9: Calendar

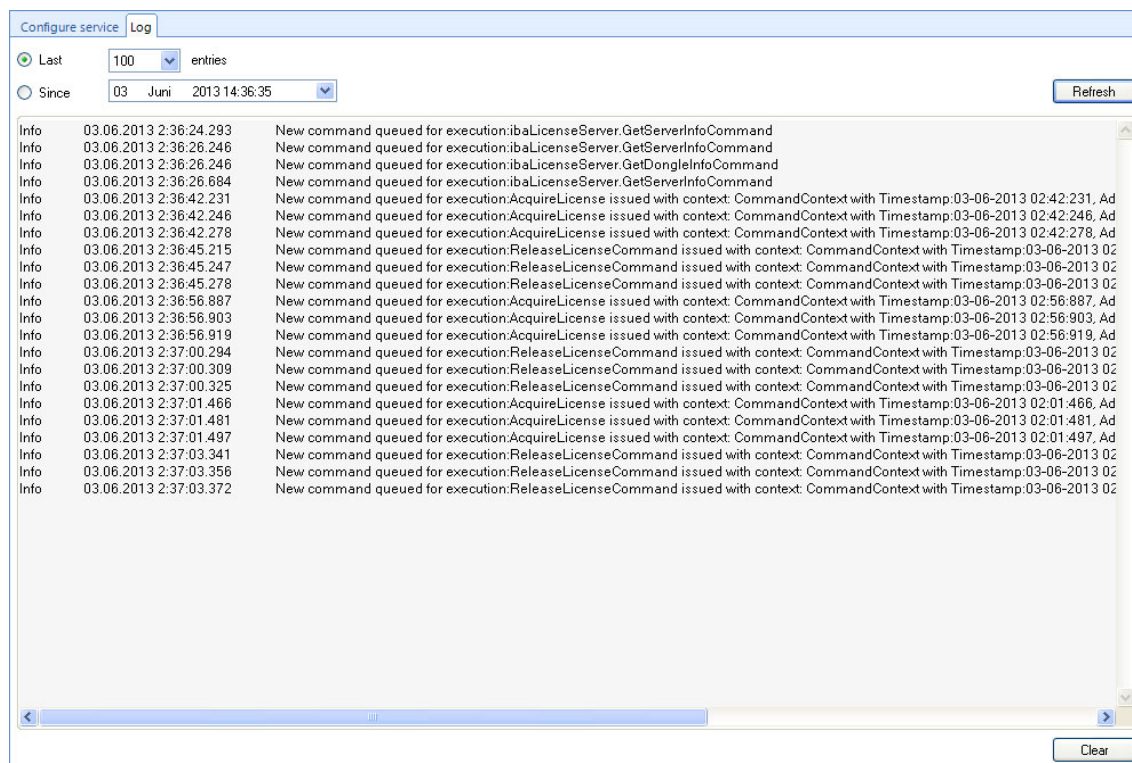


Figure 10: Service Logs

A click on <Refresh> refreshes the service log entries, a click on <Clear> clears the entries.

5.4 Statistics

A click on the <View Statistics> button in the Parameter section opens a statistics window.

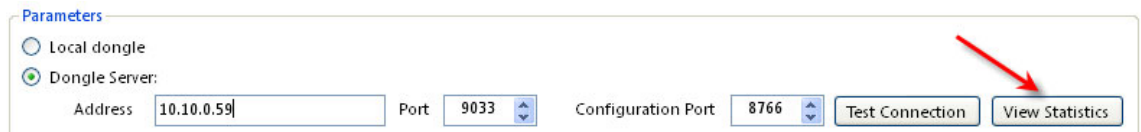


Figure 11: Open statistics window

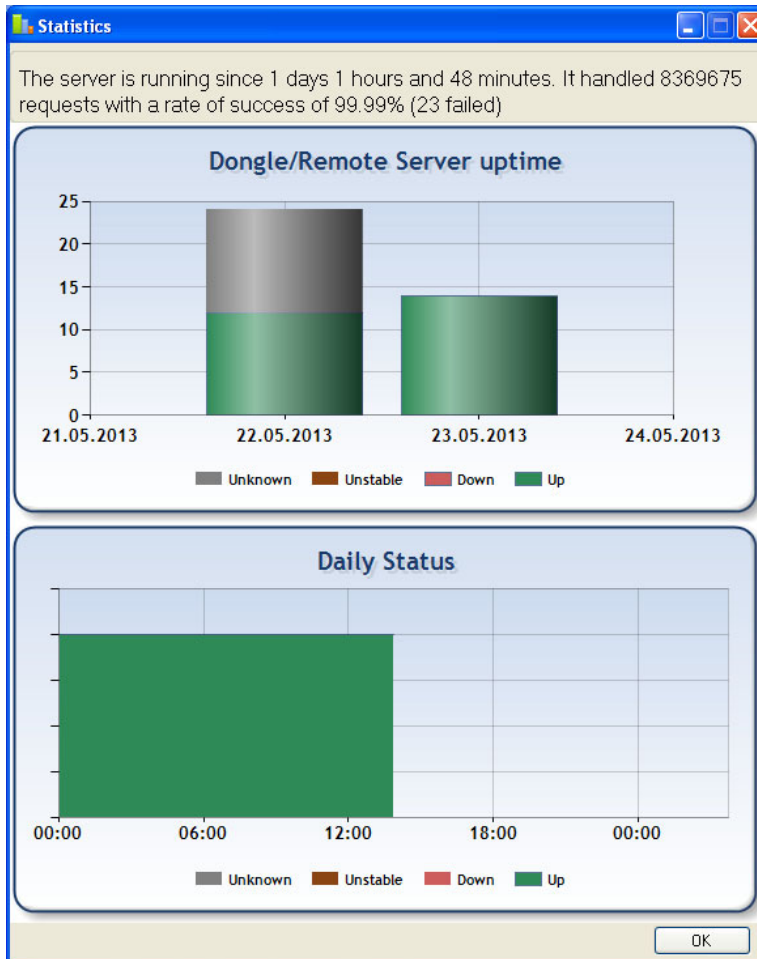


Figure 12: Statistics

You can see the following information:

- How long is the server running?
- How many requests were handled?
- Bar chart of the server uptime per day.
- Daily status of the server.

Different colors indicate different states:

Grey (unknown): Service is down, no statistics are recorded

Brown (unstable): Toggling between running and down within one minute

Red (down): Server is down or dongle is missing.

Green (up): Server is running and dongle is present.

Zooming

It is possible to zoom in the daily status chart. Keep the left mouse key depressed and move the mouse over the area you want to zoom in (e. g. grey area in the figure below). In the zoomed view, a scroll bar appears to scroll forward and backward. If you want to zoom out to initial level, click on the button in the bottom left corner.

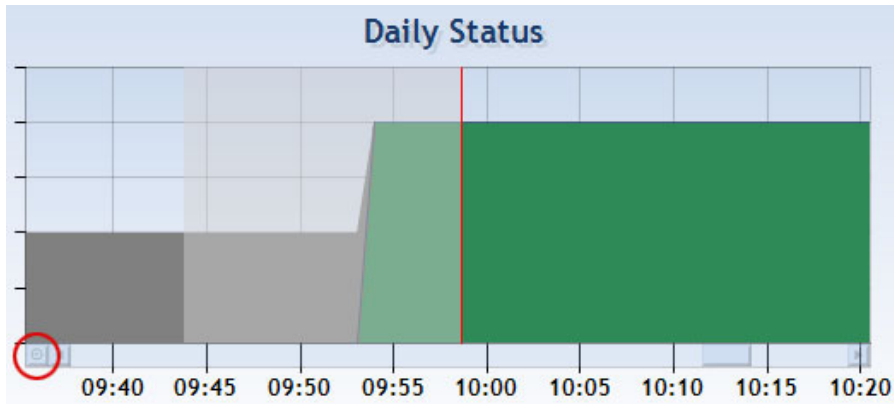


Figure 13: Zooming statistics

A click on <OK> closes the statistics window.

5.5 Administration

ibaLicenseService-V2 provides an administration tool for central management of the connected computers and the corresponding licenses. It is helpful when you

- change the dongle location
- modify addresses of PCs
- want to remotely configure service settings.

To open the window for the administration tool click on the „License Services“ tab or select „License Services“ in the „View“ menu.

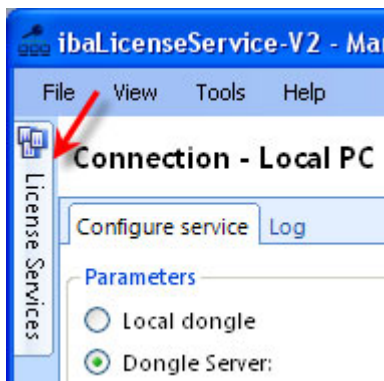
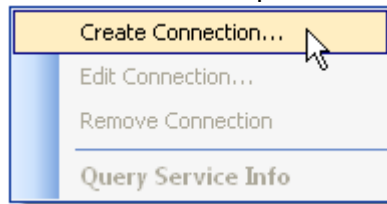


Figure 14: Open administration tool

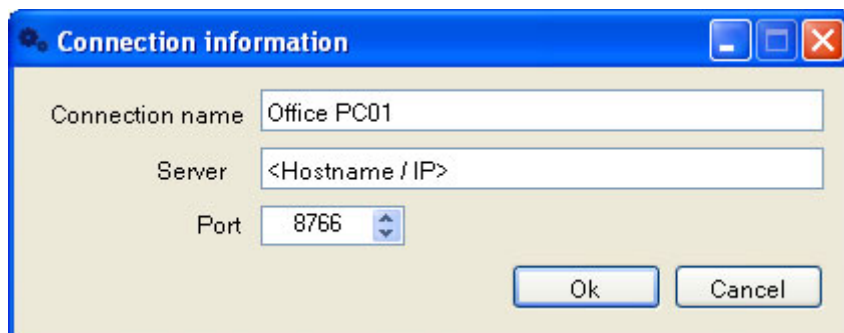
5.5.1 PC Setup

Add a PC

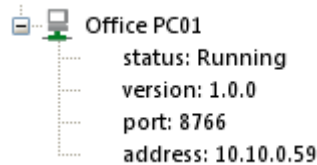
1. Right-click anywhere in the „License Services“ window and select “Create Connection...” from the dropdown menu.





2. The “Connection information” form opens. Enter a connection name and the server address (Hostname or IP address). Do not change the default port number.



3. Click on <OK>.
4. The PC is listed in the connection tree:

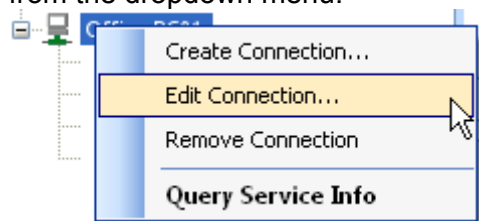


and gives the following information:

- the service status: running or stopped
- the service version
- the service port
- the PC address
- a symbol indicates the connection status of the PC:
 -  connected
 -  not connected

Edit a PC

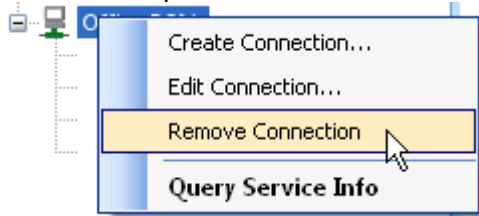
1. Right-click on a PC name in the connection tree and select “Edit Connection...” from the dropdown menu.



2. The “Connection information” form opens. Edit the settings.
3. A click on <OK> closes the form.

Remove a PC

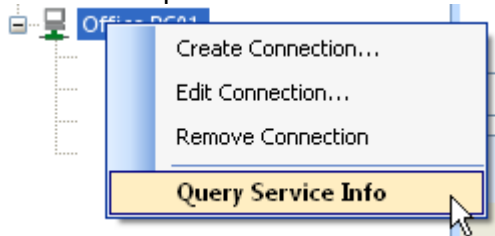
1. Right-click on a PC name in the connection tree and select “Remove Connection” from the dropdown menu.



2. The PC will be removed from the connection tree.

5.5.2 Editing a license configuration

1. Right-click on a PC name in the connection tree and select “Query Service Info” from the dropdown menu or double-click an entry.



2. The corresponding settings are displayed in the right side in the “Parameters” section.

Connection - Local PC

Configure service Log

Parameters

Local dongle

Remote Dongle Server:

Address Port Configuration Port

Local License Usage

License name	Usable	Reserved
ibaAnalyzer E-Dat	<input checked="" type="checkbox"/>	<input type="checkbox"/>
ibaAnalyzer DB	<input checked="" type="checkbox"/>	<input type="checkbox"/>
ibaAnalyzer DATExtraktor	<input checked="" type="checkbox"/>	<input type="checkbox"/>
ibaDatManager	<input checked="" type="checkbox"/>	<input type="checkbox"/>

3. Modify the settings, if necessary and confirm with a click on <Save Configuration>.



Note

In the main form header you can see the currently active connection.

6 Support & Contact

Support

Phone: +49 911 97282-14
Fax: +49 911 97282-33
E-Mail: support@iba-ag.com



Note

If you require support, specify the serial number (iba-S/N) of the product.

Contact

Headquarters

iba AG
Koenigswarterstr. 44
90762 Fuerth
Germany
Phone: +49 911 97282-0
Fax: +49 911 97282-33
E-Mail: iba@iba-ag.com
Contact: Mr. Harald Opel

Regional and Worldwide

For contact data of your regional iba office or representative please refer to our web site www.iba-ag.com.